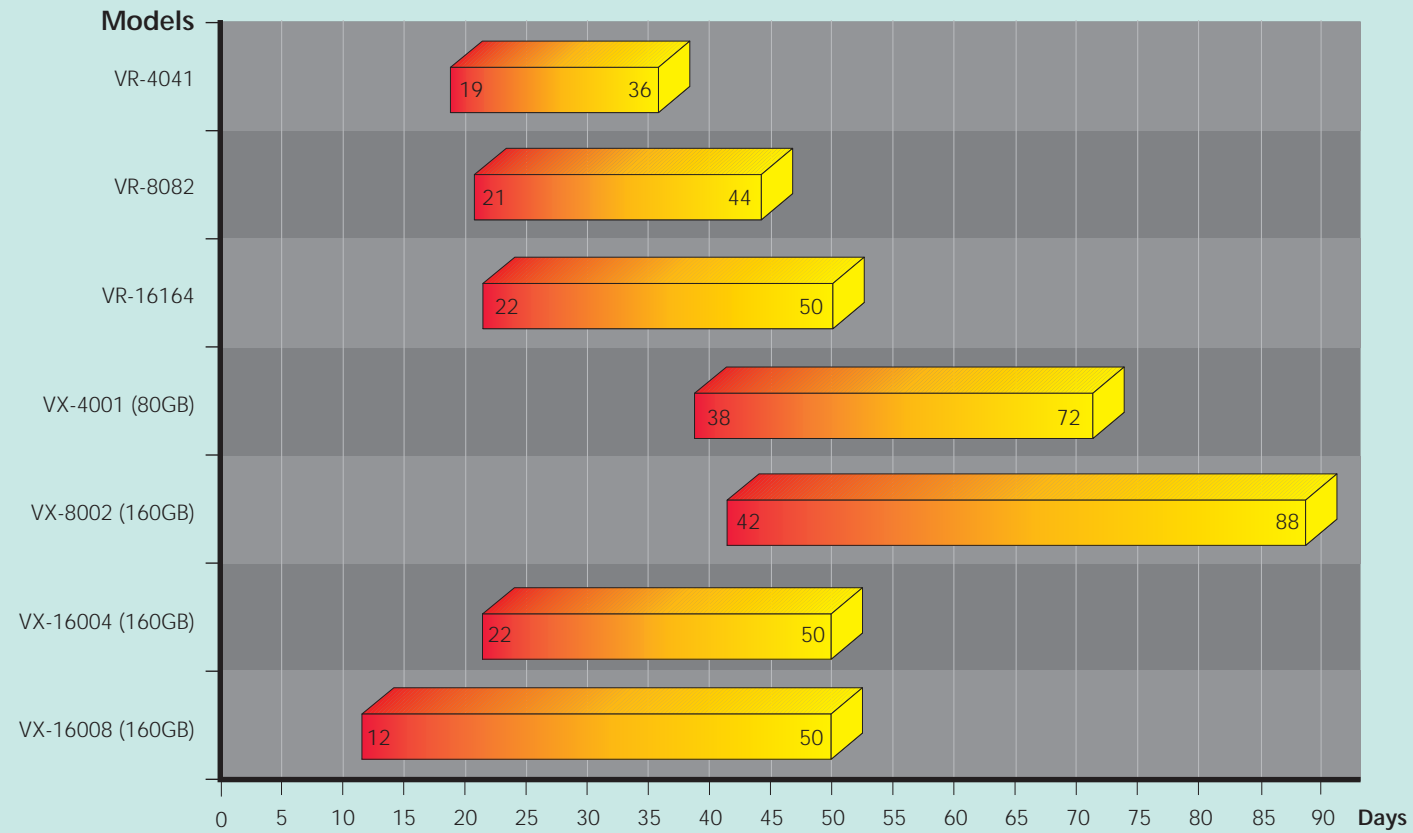


Network CCTV | VT VR VX Series

Recording Duration (Days) of TeleEye III+ VR & VX Series



■ continuous recording - all cameras
■ 1 second per frame time lapse recording - all cameras
■ 2 seconds per frame time lapse recording - all cameras

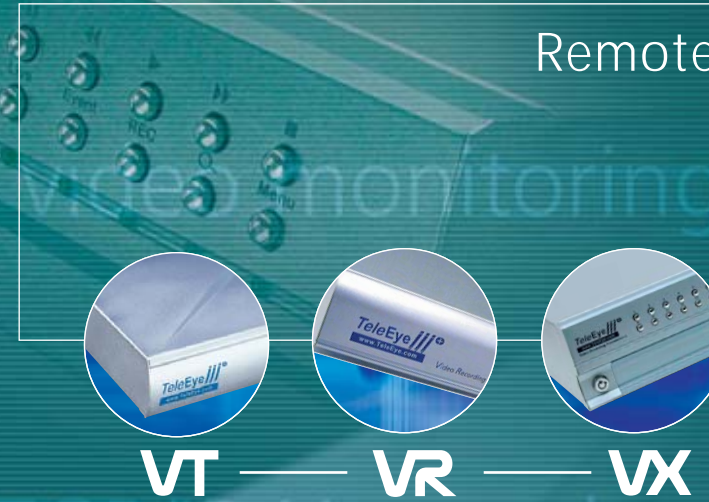
Remark: Recording duration based on recording from all cameras at resolution 320x240, medium picture quality, moderate amount of motion and recording settings. The actual recording duration is subject to actual camera situation.

TeleEye III+

Network CCTV | VT VR VX Series

Total Solution for

Remote Monitoring & Digital Recording



TeleEye III+ Network CCTV is designed to fulfill every contemporary video surveillance requirement. It offers excellent performance on video transmission through TCP/IP and telephone networks. More than that, videos can be digitally recorded for further reference. Both live and recorded videos can be reviewed at anytime, anywhere.

Apart from video transmission, **TeleEye III+** Network CCTV comes with sophisticated event management function. A wide range of events can be handled by the system. User-defined actions would be carried out immediately when an event is detected.

With its versatile features and excellent performance, **TeleEye III+** Network CCTV is an ideal security and

Features:

- Flexible connections: Internet, LAN, PSTN, ISDN, ADSL, mobile network...
- Dual connectivity: simultaneous TCP/IP & dial-up connections
- Up to 16 video & alarm input models
- Real time video transmission up to 25/30 fps on LAN for PAL/NTSC up to 20 fps on PSTN
- Resolution up to 640x480 pixels
- Built-in web server
- Support static & dynamic IP
- Web video development tool
- Mobile video on Pocket PC
- Triplex operation: simultaneous video monitoring, recording & playback
- Event management
- Remote recording control & playback
- Video recording rate up to 100/120 fps
- Standalone operations
- Dual composite video outputs
- OSD menus
- Built-in or removable hard drive design
- Video backup through LAN
- Watchdog timer for reliability
- Pre- & post-alarm video recording
- Compatibility with popular telemetry systems
- Single- & multi-site monitoring
- Audio transmission with **CAMERIO TeleEAR**

Comprehensive Product Family

TeleEye III+ Network CCTV consists of three series of video transmitters and a series of video reception software for various applications.

TeleEye III+ VT Series

A cost effective video transmitter for remote video viewing.

TeleEye III+ VR Series

A full triplex operating system with built-in hard drive for video recording, remote video viewing and playback.

TeleEye III+ VX Series

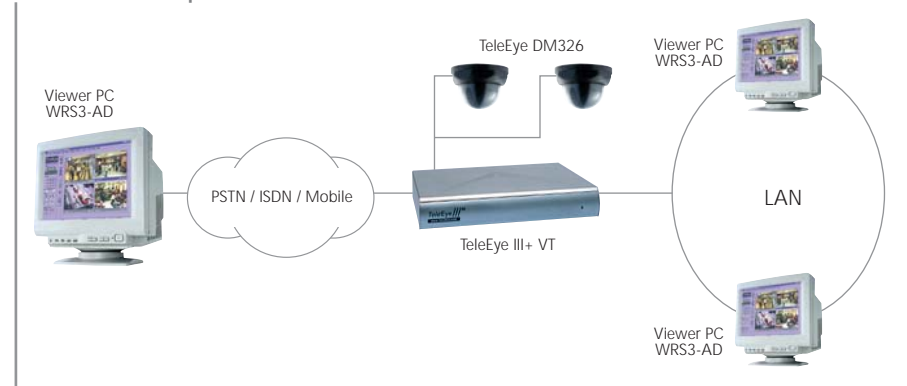
An all-in-one video recording transmitter with dual composite video outputs and removable hard drive for standalone and remote operations.



Dual Connectivity

All **TeleEye III+** Network CCTV transmitters come with RJ-45 and RS-232 interfaces for applications on both TCP/IP and telephone networks. With the proprietary video compression technology, frame refreshing rate can reach 25/30 fps on LAN. The innovative dual connectivity characteristic makes **TeleEye III+** Network CCTV possible for simultaneous video transmission over TCP/IP (LAN, Intranet or Internet) and telephone (PSTN, ISDN, mobile) networks.

TCP/IP and Dial-up Connections



Simultaneous Monitoring, Recording & Playback

Both **TeleEye III+** VR and VX series support triplex operation in which video monitoring, recording and playback can be carried out simultaneously. Recording frame rate up to 50/60 fps and 100/120 fps can be achieved in **TeleEye III+** VR and VX series respectively. The highest recording resolution is 640x480 pixels. Recording operation can be activated remotely by manual, scheduled and event-driven modes. Local recording capacity of **TeleEye III+** VR series ranges from 40GB up to 160GB. **TeleEye III+** VX series incorporates dual composite video outputs for its local standalone monitoring and recording. Moreover, its removable hard drive design allows users to flexibly expand the recording capacity according to their application requirements.

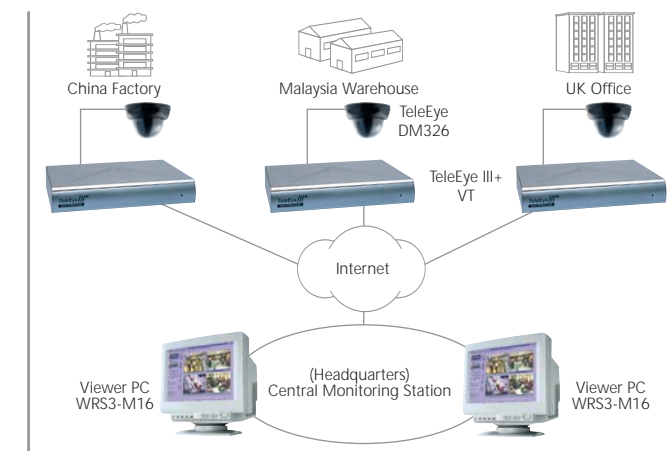
Sophisticated Event Management

Event handling is one of the major concerns in the design consideration of **TeleEye III+** Network CCTV. When the video transmitter is triggered by events like alarm, motion detection, video loss, disk full or system failure, user-predefined actions to deal with different events would be carried out immediately. Actions to be taken include pre- and post- alarm video recording, switch control, dialback and email notification. All details of the events are logged in a sophisticated database.

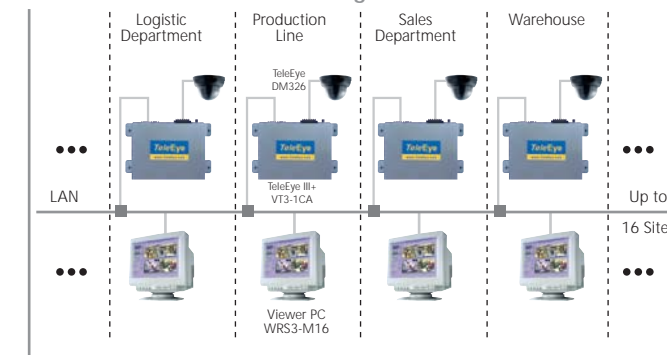
Scalable Network Configuration

TeleEye III+ Network CCTV is scalable to build a global video monitoring and recording system from anywhere within TCP/IP networks. It incorporates video surveillance and connects any cameras to an existing LAN which saves users unnecessary cabling and equipment costs. Video monitoring can be carried out on any PC inside the network and no longer restricted within a security control room. **TeleEye III+** Network CCTV is also an ideal solution for remote surveillance of many remote sites. Videos from up to 16 different locations can be monitored and recorded in a single PC via the Internet or PSTN.

Simultaneous Monitoring of 16 Remote Sites via the Internet



Simultaneous 16 Sites Monitoring on LAN



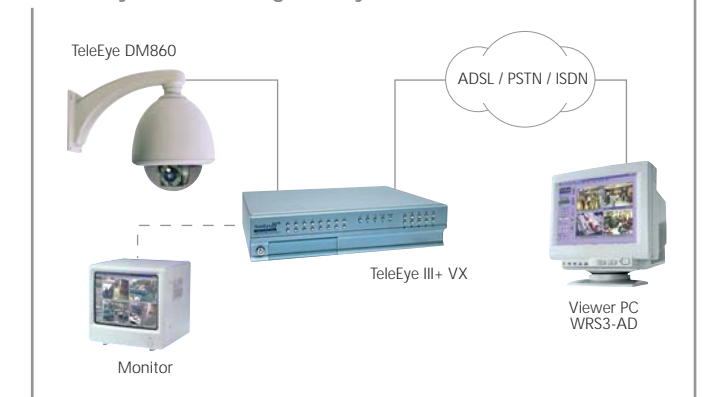
Dynamic IP Internet Connection

Expensive static IP address requirement may be your major obstacle to the Internet video monitoring applications. Supported by our proprietary **sureLINK** technology, **TeleEye III+** Network CCTV transmitters support video transmission on the Internet connection coming with dynamic IP address. Static IP address is no longer required. **TeleEye III+** Network CCTV transmitter can be located on the Internet through its unique **sureLINK** address.

Versatile Telemetry Control

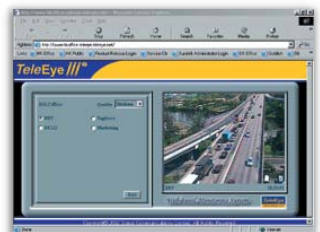
All **TeleEye III+** Network CCTV transmitters work well with a wide range of telemetry systems and speed dome cameras available in the marketplace. Apart from **TeleEye DM860** speed dome and **TeleEye DM326** pan/tilt dome camera series, **TeleEye III+** Network CCTV transmitters are also compatible with popular brands like Pelco, Panasonic, ViCON, VCL, BBV ...

Telemetry Control through TeleEye Transmitter



Live Video on Web

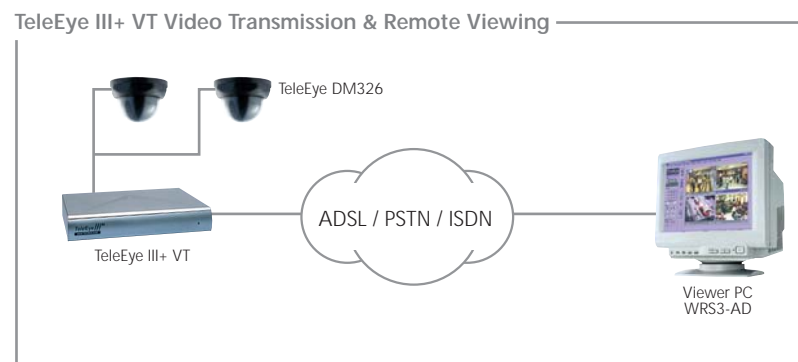
All **TeleEye III+** Network CCTV transmitters come with built-in web servers. User can connect to the transmitter by using a standard web browser through the Internet. By using **Cyber TeleEye** Web Video Solution, users can add live videos onto an existing web site.



TeleEye III+ Network CCTV Video Transmitters

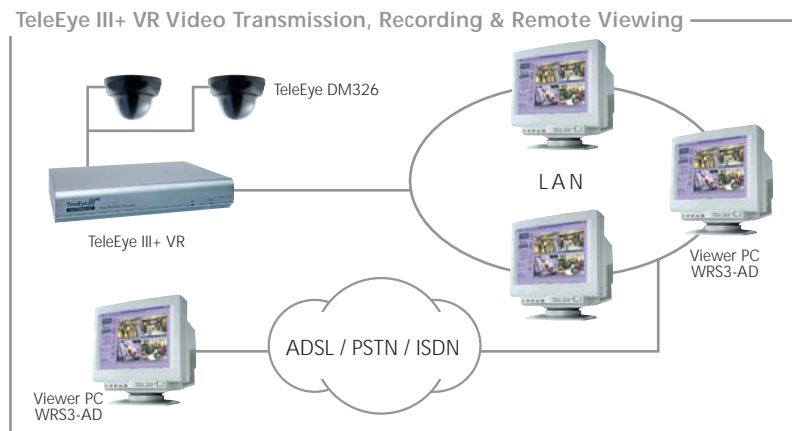
TeleEye III+ VT Video Transmission & Remote Viewing

- One-plug module on LAN/Internet
- Simultaneous TCP/IP & dial-up connections
- Refreshing rate up to 25/30 fps
- Resolution up to 640x480 pixels



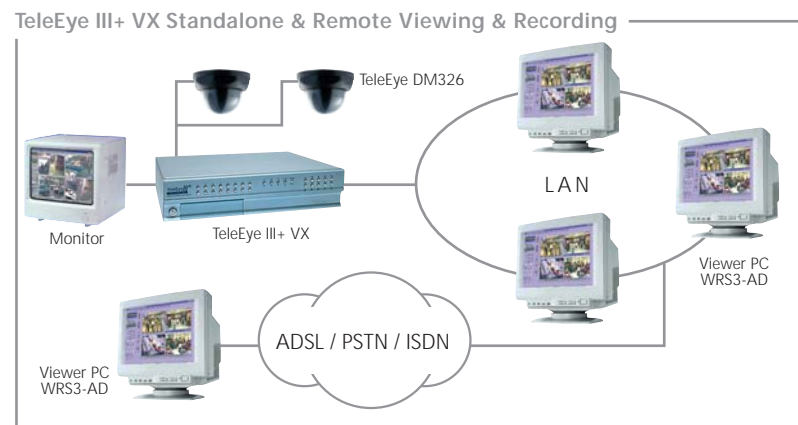
TeleEye III+ VR Video Transmission, Recording & Remote Viewing

- Built-in 40GB to 160GB hard drive
- Simultaneous monitoring, recording & playback
- Recording rate up to 50/60 fps
- Event management



TeleEye III+ VX Standalone & Remote Viewing & Recording

- Removable hard drive for flexible recording expansion
- Simultaneous standalone & remote operations
- Dual composite video outputs with OSD menus
- Video recording up to 100/120 fps



TeleEye Application Software Program

All **TeleEye III+** Network CCTV can be partnered with the following proprietary software programs for different applications.

Single-site Monitoring

TeleWin Single-site Reception Software (WRS3-AD) allows connection to one **TeleEye III+** Network CCTV transmitter through TCP/IP or telephone connection at anytime.

- Digital video recording & intelligent playback search
- Automatic video recording on event
- Electronic patrol
- Comprehensive event log



Multi-site Monitoring

TeleWin Multi-site Reception Software (WRS3-M) allows connections up to 4 **TeleEye III+** Network CCTV transmitters simultaneously.

TeleWin Multi-site Reception Software (WRS3-M16) manipulates up to 16 video streams from multiple **TeleEye III+** Network CCTV transmitters simultaneously through LAN or the Internet.

- Up to 16 sites/cameras monitoring
- Network scalable configurations
- Digital video recording
- Electronic patrol



Central Monitoring Station

TeleEye Central Monitoring Station is designed to fulfill every real life requirement in a central monitoring station. Different levels of access right on the system can be assigned to operators in the central monitoring station. Customer's details are stored for prompt actions upon an alarm event. Event happened in the customer's premises and the corresponding actions taken by the station's operator are all traceable in the centralized logging system.



- Different levels of access right
- Audit trail
- Customer account system
- Patrol sequence setting
- Centralized events logging system

Web Video Solution

Cyber TeleEye allows users to put and manage **TeleEye** live video on their own web sites. Video Page Generator (CY-G100) is a development tool to add **TeleEye** video to a web page. Video Server (CY-S450) is designed for increasing the Internet connection capacity of the web video solution. Its scalable architecture allows flexible expansion by cascading a number of video servers.



- Video display in pop-up/on-screen mode
- Access restriction & duration control
- Video Server handles hundreds of viewers
- Multi-rate transmission

Mobile Video Monitoring

TeleEye M-monitoring Solution (M-101) brings video monitoring to a Pocket PC. Video from **TeleEye III+** Network CCTV transmitter can be received on a Pocket PC through wireless data networks, including CSD, HSCSD, GPRS, CDMA, WCDMA and wireless LAN.



- Resolution up to 320 x 240 pixels
- Remote recording viewing
- Telemetry control
- Alarm notification

PC Requirements

	WRS3-AD	WRS3-M	WRS3-M16
CPU:	Pentium III 866MHz or above		Pentium IV 1.5GHz or above
RAM:	128MB or above		256MB or above
Display:	800x600, hi-colour or better		800x600, hi-colour or better
OS:	MS Windows 98, ME, NT, 2000, XP		MS Windows 2000, XP

Product Feature

Transmitter & Software

Specification Table

	MODEL	VT Series					VR Series			VX Series			
		VT3-1CA	VT3-2CA	VT3-4CA	VT3-8CA	VT3-16CA	VR-4041	VR-8082	VR-16164	VX-4001	VX-8002	VX-16004	VX-16008
VIDEO INPUT	STANDARD	(P): PAL/CCIR, 625 lines, 50 fields per second (N): NTSC/EIA, 525 lines, 60 fields per second composite video, 1Vp-p, BNC					(P): PAL/CCIR, 625 lines, 50 fields per second (N): NTSC/EIA, 525 lines, 60 fields per second composite video, 1Vp-p, BNC			(P): PAL/CCIR, 625 lines, 50 fields per second (N): NTSC/EIA, 525 lines, 60 fields per second composite video, 1Vp-p, BNC			
	NO. OF CHANNELS	1	2	4	8	16	4	8	16	4	8	16	
	RESOLUTION	quality mode: 640x480, 320x240, 160x120 pixels speed mode: 512x384, 256x192, 128x96 pixels					quality mode: 640x480, 320x240, 160x120 pixels speed mode: 512x384, 256x192, 128x96 pixels			quality mode: 640x480, 320x240, 160x120 pixels speed mode: 512x384, 256x192, 128x96 pixels			
VIDEO OUTPUT	STANDARD	N/A					N/A			(P): PAL/CCIR, 625 lines, 50 fields per second (N): NTSC/EIA, 525 lines, 60 fields per second composite video, 1Vp-p, BNC			
	NO. OF CHANNELS	N/A					N/A			2			
STANDALONE OPERATION	TYPE	N/A					N/A			system configuration, operation, audit trail			
COMMUNICATION	NETWORK	RJ-45, 10/100 base-T ethernet (auto-sensing)					RJ-45, 10/100 base-T ethernet (auto-sensing)			RJ-45, 10/100 base-T ethernet (auto-sensing)			
	CONCURRENT USERS	4	6	10	18	6	10	18	6	10	18		
	WEB SERVER	built-in web server					built-in web server			built-in web server			
	sureLINK	support Internet connection assigned with dynamic IP address					support Internet connection assigned with dynamic IP address			support Internet connection assigned with dynamic IP address			
	MODEM PORT	RS-232C: DB-9 male, asynchronous, 8 data bits, 1 stop bit, no parity, 9.6k-115.2kbps, hardware flow control					RS-232C: DB-9 male, asynchronous, 8 data bits, 1 stop bit, no parity, 9.6k-115.2kbps, hardware flow control			RS-232C: DB-9 male, asynchronous, 8 data bits, 1 stop bit, no parity, 9.6k-115.2kbps, hardware flow control			
	AUX PORT	RS-232C: DB-9 female, asynchronous, 5-8 data bits, 1-2 stop bits, no/odd/even parity, 2.4k-19.2kbps, hardware flow control					RS-232C: DB-9 female, asynchronous, 5-8 data bits, 1-2 stop bits, no/odd/even parity, 2.4k-19.2kbps, hardware flow control			RS-232C or RS-422/485 RS-232C: DB-9 female, asynchronous, 5-8 data bits, 1-2 stop bits, no/odd/even parity, 2.4k-19.2kbps, hardware flow control RS-422/485: 2-way terminal, asynchronous, 5-8 data bits, 1-2 stop bits no/odd/even parity, 2.4k-19.2kbps			
	RECORDING	MODE	N/A					manual, programmable, event-driven			manual, programmable, event-driven		
	HD TYPE	N/A					IDE interface, unremovable			IDE interface, removable			
	HD SIZE	N/A					40GB	80GB	160GB	40GB, 80GB, 160GB, selectable			
	MAX. RECORDING RATE	N/A					12.5/15fps	25/30fps	50/60fps	12.5/15fps	25/30fps	50/60fps	100/120fps
EVENT HANDLING	EVENT TYPE	external alarm, video loss, system failure					external alarm, video motion detection, video loss, recording full, system failure			external alarm, video motion detection, video loss, recording full, system failure			
	ACTION TYPE	dial back, relay control, email notification					dial back, local recording, relay control, email notification			buzzer, dial back, local recording, relay control, email notification			
	EXTERNAL INPUTS	1x, NC/NO	4x, NC/NO	8x, NC/NO	16x, NC/NO	4x, NC/NO	8x, NC/NO	16x, NC/NO	4x, NC/NO	8x, NC/NO	16x, NC/NO		
RELAY SWITCH	NO. OF CHANNELS	1			2		4			4			
	MAX. RATING	24V AC, 1000mA					24V AC, 1000mA			24V AC, 1000mA			
POWER	VOLTAGE	12V DC					12V DC			12V DC			
	MAX. RATING	12W					35W	48W	40W	44W	51W		
OPERATING ENVIRONMENT	AMBIENT TEMPERATURE	0°C - 50°C					5°C - 50°C			5°C - 50°C			
	RELATIVE HUMIDITY	< 90% (no condensation)					< 85% (no condensation)			< 85% (no condensation)			
MECHANICAL DESIGN	DIMENSION	254mm x 210mm x 45mm			333mm x 300mm x 72mm		360mm x 325mm x 80mm			360mm x 345mm x 95mm			
	WEIGHT	1.3kg	1.1kg	2.8kg		3.8kg	4.2kg	5.1kg		5.5kg	6.3kg		